

DPRO 6 TV

User's manual



Author	A.Tomassini
Version	3.2.2 - 05/05/2021
Copyright	© 2021 ITEL Elettronica e Telecomunicazioni Snc

Table of contents

Section 1 Description	5
1 List of changes	5
2 Warnings	5
3 Front panel	6
4 Rear panel	6
5 Editing and navigation	7
Section 2 Front panel display	10
1 Audio processor	10
AGC	10
Compression levels	10
Multiband limiter parameters	11
Multiband limiter thresholds	11
Bass parametric eq	11
Bass clipper/limiter	12
Loading a preset	12
Saving a preset	13
Bypass	13
2 Audio input setup	14
Audio levels monitor and input level setting	14
Audio source setup	14
Audio processor preset selection	15
Audio fallback setup (audio backup)	15
3 Audio output setup	16
Audio output regulation	16
Audio delay	16
Loudness limiter	17
4 System setup	18
Display, Source Dependent Presets, Device ID	18
GPI	18
PassCode Setup	20
Ethernet setup	20
System info	20
Options	21
Login window	21
5 Headphones Level	22
Section 3 Programmng software	24
1 Main window	24
2 Processor Params	25
Processor Presets	25
AGC	27
Multiband	28

Bass EQ	29
Audio input-output	30
System setup	31
Loudness limiter	32
3 Loading and saving a preset	33
4 Loading and saving system	34
5 Passcode setup	35

Section

Description

1

1 Description

This product is a fully multiband digital audio processor ideal for general Dtv and multimedia applications.

All audio processing is realized using DSPs, allowing for stable performance over time and extending functionality with firmware upgrades.

The audio processing chain comprises a two bands AGC which feeds the six bands limiter-compressor, followed by a final clipper-limiter operating at 96KHz, optimized for distortion masking, thus obtaining a cleaner and clipping artifacts free sound.

1.1 List of changes

1.0.0.0	28/07/2015	first release
1.1.0.0	10/09/2015	updated to new firmware 3.0 features
1.2.0.0	13/01/2016	updated to new firmware 3.1 features
3.2.0.0	14/09/2016	updated to new firmware 3.2 features
3.2.1.0	08/03/2021	updated to new firmware 3.2.1 features

1.2 Warnings



Before attempting any operation, please follow the safety instructions contained in the following paragraph.

The producer declines any liability for damage to people or things due to non-compliance, even if partial, of the following indications

- Ensure that the supply voltage corresponds to what is indicated on the apparatus.
- Ensure that the electrical system is equipped with a ground connection.
- Use only power sockets and cables with ground connection
- Disconnect power before attempting any operation inside the device.
- The power cutting device is the power cord, so this should be easily accessible and the socket must be positioned close to the apparatus.
- Any operation involving the access to internal parts must be performed only by trained service personnel.

1.3 Front panel



Front panel indicators and rotary knob

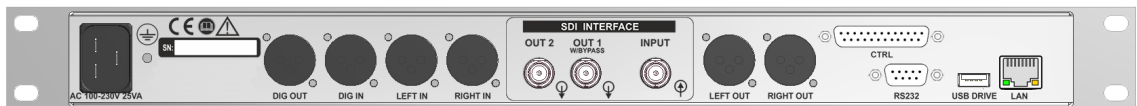
Headphone stereo jack 6,3mm (1/4")

- GATE: led is on when level is below gate threshold
- CLIP: the analog input level is too high.
- DIG IN: AES/EBU digital input is selected as audio source
- IP-SDI: SDI is selected as audio source or Network audio input.

- AGC: input AGC gain level
- MULTIBAND LIMITER: multiband limiter compression level

Menus navigation and parameter editing is done through the rotary knob.

1.4 Rear panel



Connectors on rear panel

- DIG OUT (XLR M) AES/EBU output
- DIG IN (XLR F) AES/EBU input
- LEFT IN (XLR F) Left analog input
- RIGHT IN (XLR F) Right analog input
- SDI OUT2 (BNC F) Sdi auxiliary output, unswitched
- SDI OUT1/SW (BNC F) Sdi main output with bypass switch
- SDI IN (BNC F) Sdi input
- LEFT OUT (XLR M) Left channel analog output
- RIGHT OUT (XLR M) Right channel analog output
- RS232 (DSUB 9F) RS232 connector
- USB DRIVE (USB-A) USB connector for fallback audio on external drive (option)
- LAN (RJ45) LAN connector for remote control or streaming audio module (option)

1.5 Editing and navigation

Menu navigation and parameters editing is done by the front panel knob.

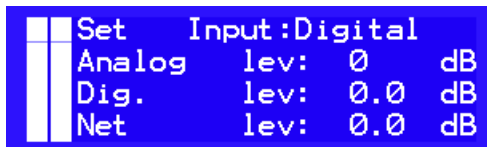
On the main menu which appears after firmware boot, is possible to select the submenu for the various settings.



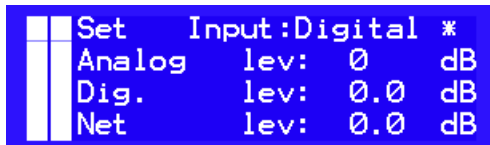
Pressing the knob, will enter the selected submenu.



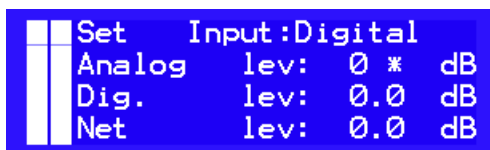
Once entered in the desired sub-menu, if there are adjustable parameters, you can proceed to editing



Pressing the knob, an asterisk "*" will appear next to the first editable element. This will not happen if, on the current window, there are no editable parameters.



Turn the knob to position the "*" cursor on the other editable elements of the current window.



If you want now to change the analog input sensitivity, press the knob again. A "<" symbol will appear next to the parameter to indicate that this is being edited.

```

Set      Input:Digital
Analog   lev:  0 < dB
Dig.     lev:  0.0 dB
Net      lev:  0.0 dB

```

Turning the knob, you now will modify the selected parameter's value.

```

Set      Input:Digital
Analog   lev: -6 < dB
Dig.     lev:  0.0 dB
Net      lev:  0.0 dB

```

Once set the desired value, press the knob again. The cursor will switch to "*" again, indicating that items navigation mode is now active and other items can be selected and edited as described before.

```

Set      Input:Digital
Analog   lev: -6 * dB
Dig.     lev:  0.0 dB
Net      lev:  0.0 dB

```

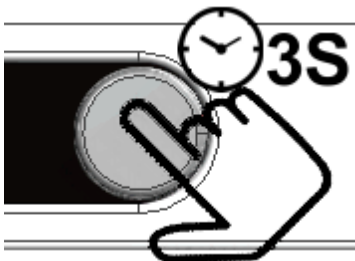
If editing is however terminated, press the knob again and the "*" cursor will disappear and you can rotate the knob to navigate to other windows.

```

Set      Input:Digital
Analog   lev: -6  dB
Dig.     lev:  0.0 dB
Net      lev:  0.0 dB

```

Inside any submenu, pressing the knob for more than 3 seconds, will cause a jump to the main menu.



```

DPRO
Audio Input  <
ID:STATION NAME

```

When pressing the knob for 1 seconds, will appear the [Headphone Level](#) regulation.

Section

Front panel display

2

2 Front panel display

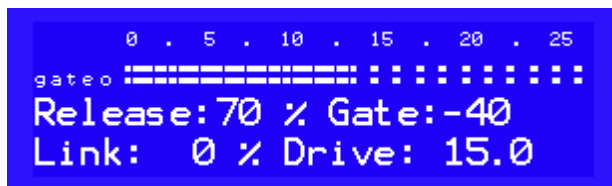
Following are listed all menus and functionalities available on the current firmware release.

2.1 Audio processor



Into this section are comprised all functions and menus related to the audio processor.

2.1.1 AGC



This window contains the settings for the dual band automatic gain control (AGC) block, placed at the head of audio processing chain.

The automatic gain control performs a pre-leveling of the signal applied to the following compressors/limiters, keeping their working point almost constant.

At the right side of the bar which indicates the level of pre-amplification applied to the input signal, is placed the AGC status indicator: if "gate" indication is off, the input level is above the gate threshold and the AGC and compressors/limiters are operating correctly, if "gate" indication is on, it means that the input signal is below the minimum level so the AGC release is slowed down and the AGC will slowly raise its gain.

Release (...): AGC release time setting (40% fastest, 200% slowest).

Gate: Gate level setting. Below this level, the AGC and multiband limiter release is slowed down.

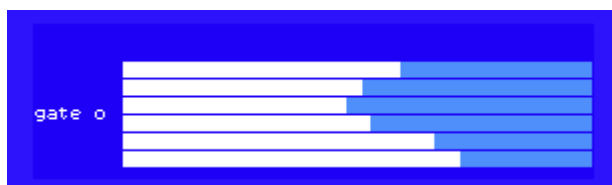
Link: set the maximum compression difference between the bass and middle/highs band.

Setting this value to zero, the bass compression level will be totally independent and this will cause also a mild auto-equalization.

Setting this value to 100%, it will force the bass compressor to have a gain never greater than the middle/highs band giving a sound very close to the original.

Drive: indicates the AGC input driving level, thus determining the AGC maximum gain .

2.1.2 Compression levels



In the window, the gate status and compression-limiting levels of the multiband limiters are shown.

2.1.3 Multiband limiter parameters

```
MbDrive: 10 dB
Release: 120 %
FinalClip Drive: 2.0 dB
Denoise: OFF Brill: 50%
```

MbDrive: multiband limiter drive level.

Release: Multiband limiter release time.

FinalClip Drive: set the wideband final clipper driving level. Higher driving level corresponds to higher loudness, but will cause higher distortion.

Denoise: Denoiser. If activated, it will monitor the high frequency content of the audio input signal, reducing the band 6 gain when HF input level is too low. It can be used to reduce noise coming from old tape recordings.

Brill: Brilliance high band (>6KHz) shelf equalizer, increasing the value produces an increase in the high frequencies.

2.1.4 Multiband limiter thresholds

```
Multiband thresholds
B1: 2.0 dB B2: -3.0 dB
B3: -2.0 dB B4: 0.0 dB
B5: 0.0 dB B6: 0.0 dB
```

All six-bands limiters thresholds are adjustable in order to apply a dynamic equalization according to the user's taste. Lowering the limiting threshold of any band will result in attenuating the level of that band, while raising the threshold, will amplify its level.

The six bands cutoff frequencies are :

B1: 100Hz and below

B2: 400Hz center frequency

B3: 800Hz center frequency

B4: 1600Hz center frequency

B5: 3200Hz center frequency

B6: 6400Hz and above

2.1.5 Bass parametric eq

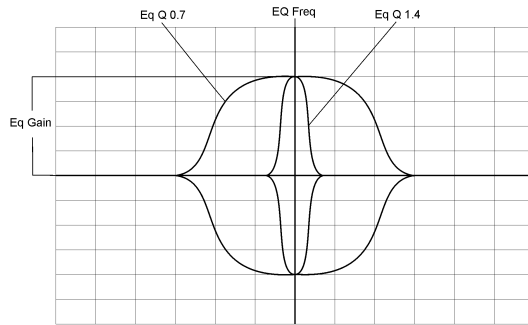
```
BassEqFreq: 80 Hz
BassEqGain: 6.0 dB
BassEq Q: 0.70
Punch Enh : 2
```

BassEqFreq: parametric equalizer center frequency

BassEqGain: gain (boost) of parametric equalizer.

BassEq Q: Q-factor (bandwidth) of parametric equalizer.

Punch enh (0..2): punch enhancer (0 off, 2 max). Give some nice "analog-style" bass enhancing.



2.1.6 Bass clipper/limiter

```
Bass Clip Thr: - 1.0 dB
Bass Clip Softness: 8

Input HPF :ON
```

Bass clip Thr: bass clipper threshold.

Bass clip softness: bass clipper curve selection.

Bass clipper will have a curve progressively softer with increasing value.

A softer curve reduces the distortion introduced by the clipping in contrast, setting to zero (corresponding to the hardest curve), will produce a bass rich in harmonics.

Input HPF (ON/OFF): enables / disables the 30Hz high pass filter for infrasonic component reduction.

2.1.7 Loading a preset

```
AIR MOD MUSIC HOT
TRY F08 SPEECH OPN

COMPARE EXIT
```

The "AIR" field shows the on-air preset name, while, in the "TRY" field, can be specified the name of a new preset to load. Once selected the desired preset, go on the "COMPARE" label which will start to flash.

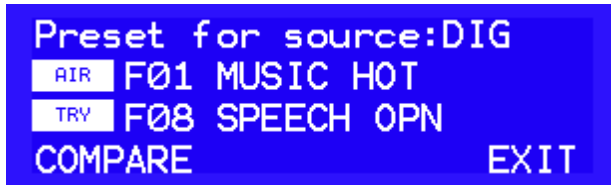
When "COMPARE" is flashing, pressing the front panel knob will cause the "TRY" preset to go on-air while the previously on-air preset will go to "TRY", allowing for comparison.

If [Source Dep.Presets](#) function was enabled, it will be possible to specify a different preset for each [audio source](#) selected so, in this case, the source for which the current preset is used will be displayed.

```
Preset for source: DIG
AIR F01 MUSIC HOT
TRY F08 SPEECH OPN

COMPARE EXIT
```


2.2.3 Audio processor preset selection

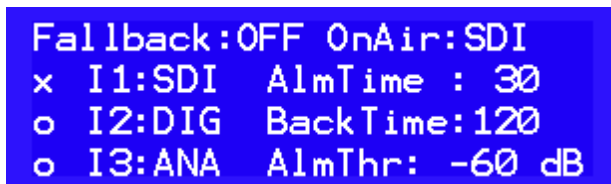


If [Source Dep.Presets](#) function was enabled, it will be possible to choose a different preset for each audio source, which can be selected in the previous menu, otherwise this window will not be visible. Once selected a preset, it can then be edit into the Audio Processor section.

The loaded preset will be assigned to the audio source currently on air.

2.2.4 Audio fallback setup (audio backup)

The processor can be set to automatically switch to an auxiliary input source if the main input audio level is below a minimum threshold.



Fallback (ON/OFF): Enable / Disable automatic audio fallback on backup source.

OnAir: audio source actually on air

I1 - I2 - I3: Channel list. The channel are listed by order of priority, with maximum priority assigned to channel 1.

When an high priority channel will become unavailable, it will be replaced by a lower priority one until its recovery.

AlmTime: Alarm timeout

Back Time: Back timeout. It is the time for which the main audio source must be above the minimum threshold before it can be set back on air.

AlmThr: minimum audio level threshold

The main audio source is considered valid If the level of both channels L / R are above the alarm threshold. If a single channel is less than the alarm threshold for a period longer than the alarm timeout, the backup source will be put on air.

When the main audio source will recover, once elapsed the "Back Timeout", it will be put back on air.

Changes will be applied upon exiting the menu.

2.3 Audio output setup

```
DPR06 TV
Audio Output <
ID:STATION NAME
```

This section contains the settings relating to the DIG OUT - L R OUT audio outputs.

2.3.1 Audio output regulation

```
ANA Out lev : 0.0 dBu
DIG Out lev : -6.0 dBFS

Test Tone (!):OFF
```

ANA LR Out : audio output level on rear XLR Left-Right OUT connector.

DIG LR Out : output audio level on rear XLR DIG OUT connector

Test tone (!): when activated, will put on air in all outputs a 400Hz tone 0dBFS.

2.3.2 Audio delay

```
SDI Out lev: -6.0 dB
SDI audio delay: 0 mS
DIG-ANA in delay: 0 mS
Delay on : Sdi only
```

SDI OUT LEV: Output level related to SDI output only. If the [loudness limiter](#) is active, this value will be added to the loudness reference value.

SDI Audio Delay: Delay applied to audio signal when SDI audio input is selected

DIG-ANA in Delay: Delay applied to audio signal when digital or analog input is selected

Delay on (SDI ONLY - Any Output): audio signal is delayed on SDI audio output only or on any output (digital or analog).

This last option can be changed only when SDI audio input is selected.

If analog or digital audio input is selected, delay will be applied to SDI output only.

2.3.3 Loudness limiter

The loudness limiter can equalize the perceived loudness among different audio program sources such as live shows, commercials, films, music videos. It operates according to the ITU-R BS1770 standard.

```
Itu1770 limiter:      ON
Reference : -14.0    LKFS
                25 . 20 . 15 . 10 . 5 . 0
dblim : ::::::::::: : :::::::::::
```

Itu1770 limiter (ON/OFF): enable / disable loudness control.

Reference: loudness limiter reference setting

dblim: level of limiting applied

Reference level is referred to an output level of 0dB. Other SDI, Analog, or AES/EBU Output level settings will be added to the reference value set.

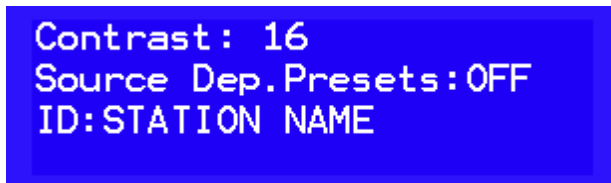
Eg: SDI output level = 0.0dB, Loudness Reference = -23dB LKFS, results in 0.0 -23 = -23dB LKFS on air

SDI output level = -10.0 dB, Loudness Reference = -23dB LKFS, result in -10 -23 = -33dB LKFS on air

2.4 System setup



2.4.1 Display, Source Dependent Presets, Device ID



Contrast: display contrast adjustment.

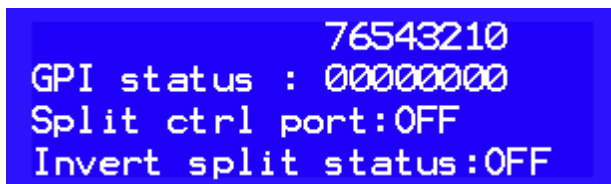
Source Dep. Presets: enable/disable audio preset selection depending on audio source.

ON: if the function is enabled, a different audio processing preset can be specified for each audio source.

OFF: if the function is disabled, the same preset will be used for all audio sources.

ID: device identifier. It is a 16 characters long label which will be shown in the main menu screen, useful for identification when multiple devices are installed.

2.4.2 GPI



In this menu it is possible to remotely select the channel to be broadcast (optional). Selection is possible via GPI, serial and Network card.

GPI status: status of the 8 available ports, from 7 to 0.

Split ctrl port: enable the function and select the communication mode.

OFF: disabled function.

GPI: active function on CTRL port.

Serial: active function on RS-232 port.

Network: active function on Ethernet port.

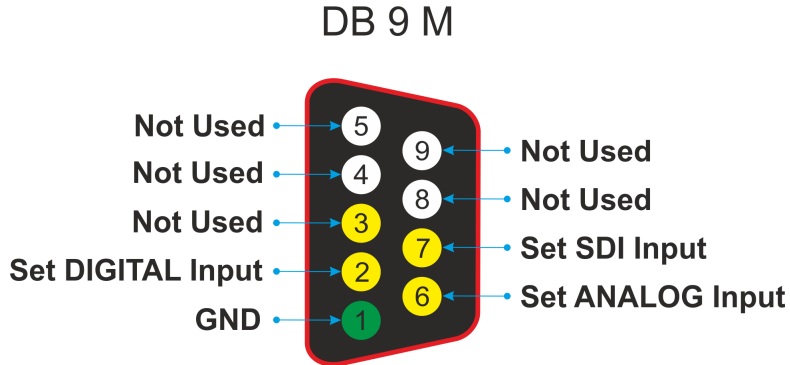
Invert split status: only in FM versions

Rear Connectro GPI (CTRL)

GPI port status:

0: Pin 6 - Set ANALOG Input

- 1: Pin 2 - Set DIGITAL Input
- 2: Pin 7 - Set SDI Input
- 3: Pin 3 - Not used
- 4: Pin 7 - Not used
- 5: Pin 4 - Not used
- 6: Pin 9 - Not used
- 7: Pin 5 - Not used



The inputs are activated by grounding the relative pin or by providing a voltage from 5 to 12VDC, in this case the jumpers placed on the board inside the device will have to be moved from the "CLOSE" to "VIN" position.

The selection of the channels through the GPI port takes place with exclusive priority on a single channel, if more inputs are activated at the same time the channel is restored before the selection

Example: the Analog channel is on the air, pin 2 is activated by broadcasting the Digital channel, at the same time pin 7 SDI is also activated, since the selection of two channels is not valid at the same time, the Analog channel returns to air .

Network commands from Lan network:

By selecting Network on "Split ctrl port" commands can be sent via LAN using the UDP protocol with standard ethernet card, the TCP protocol with IP Streaming option card.

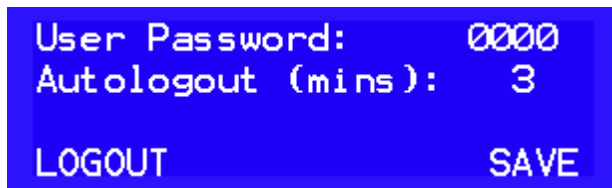
Network commans by Lan:

By selecting Network on "Split ctrl port" commands can be sent via LAN using the UDP protocol with standard ethernet card, the TCP protocol with IP Streaming option card.

```
[AB010103] select analog input
[AB010200] select digital input
[AB010301] select SDI input
[AB010002] o [AA010100] return on main channel
```

The selection command must be repeated continuously otherwise the device re-enters the main channel.

2.4.3 PassCode Setup



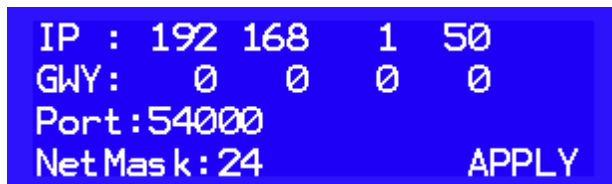
User Password: in this section the user can enter a numeric password that will be required for accessing the device. Setting "0000" (default value) will disable the password prompt.

Autologout (mins): Automatic lock timeout. If no action is done on the front panel knob within the specified time interval, the device will enter into lock state and the user will need to re-enter the password to log in again.

LOGOUT: immediate logout and lock.

SAVE: Saves any changes made to the numeric password or the duration of the automatic logout timing.

2.4.4 Ethernet setup



IP: current ip address

GWY: gateway address

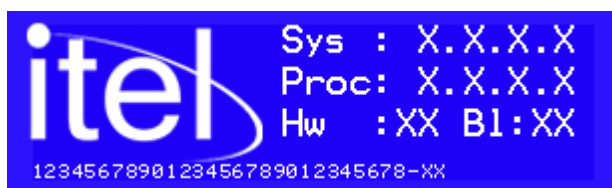
Port: UDP port number

NetMask: netmask in CIDR notation.

APPLY: apply and save changes.

This page is visible only if the network module is installed.

2.4.5 System info



Sys: operating firmware release

Proc: audio processor and MPX coder firmware release

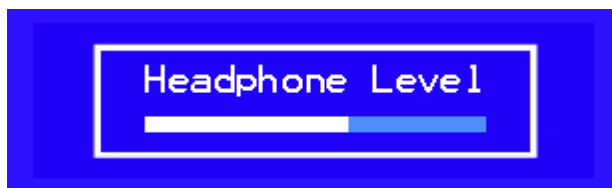
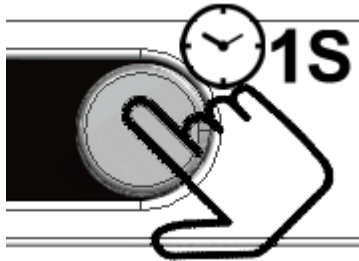
Hw: hardware release

BL: MCU bootloader release

SN: serial number

2.5 Headphones Level

The headphone level can be adjusted using the front panel knob.
Pressing the knob for more than 1 second, will show the adjustment level menù.



After 3 seconds the level menù will close automatically.

Section

Programming software

3

3 Programming software

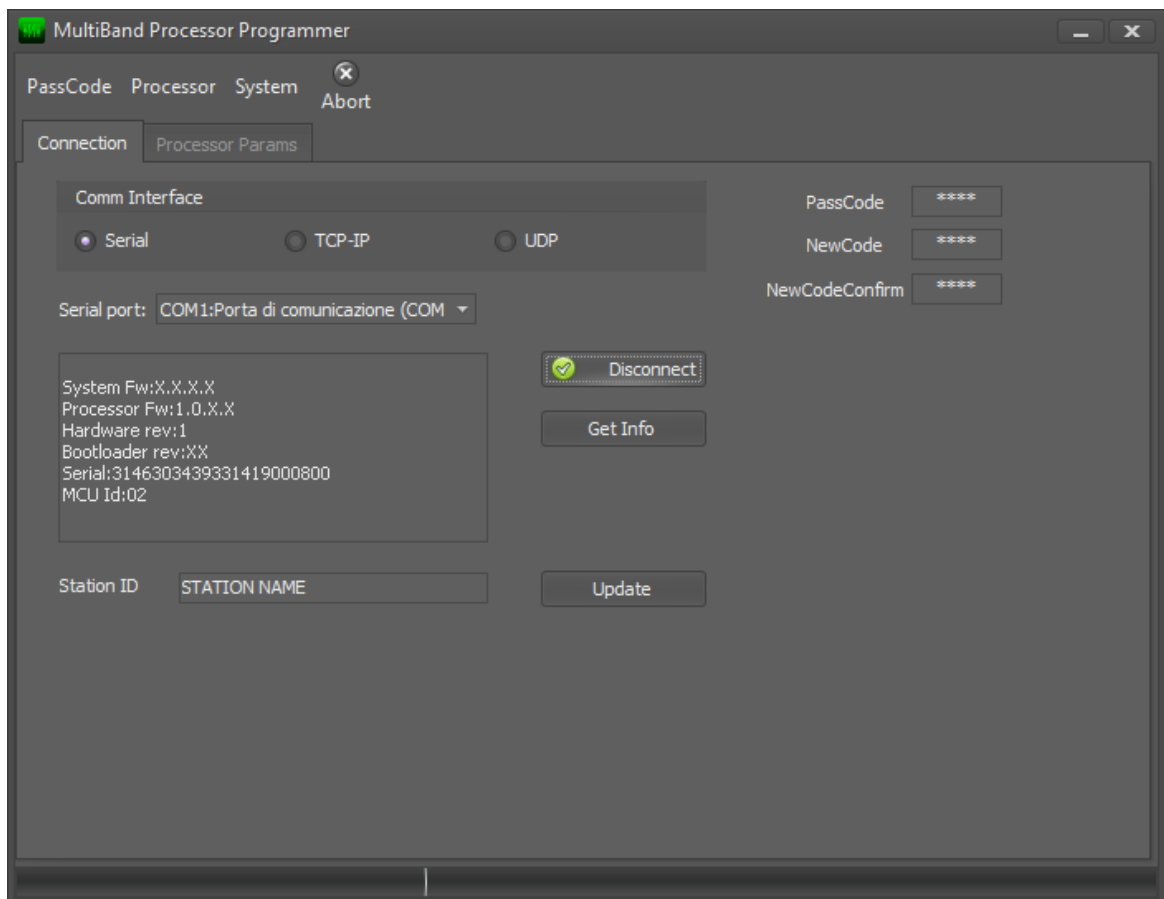
A PC based software Multiband Processor Programmer, compatible with 32 and 64 bits Windows Xp, Windows 7, Windows 8.X, Windows 10, is provided for processor remote control and setup.

Connection is done through:

- serial port 9600 baud 8N1
- ethernet port TCP-IP (if optional streaming module is installed)
- ethernet port UDP

3.1 Main window

In the main window the type of connection can be selected, via COM port or through Ethernet port using TCP-IP (needs streaming module) or UDP (needs ethernet module). Once the communication mode is set up and the processor connected, press "Connect". If communication is correct, the program will read all internal settings and device information.

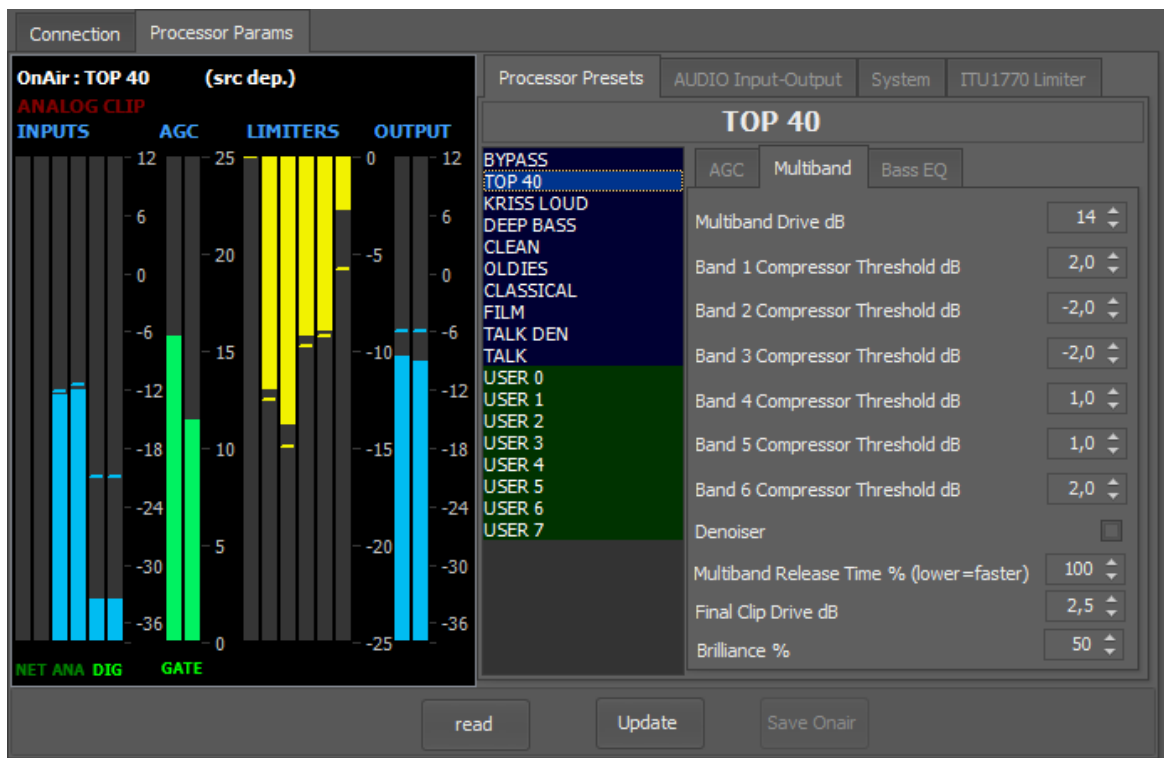


3.2 Processor Params

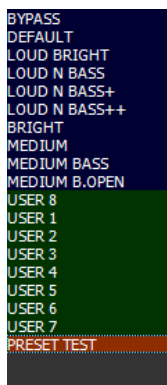
This section contains the audio process controls and presets, setting of the audio input and output sources and system parameters.

3.2.1 Processor Presets

On this page are shown the input levels, the audio input currently on air, the presets list and the audio processing parameters.



All presets are listed and, with a double click, is possible to recall a preset and put it on air. Factory presets are displayed in blue background, user definable presets in green and, in orange, a modified preset not yet saved.



The modified preset (in orange) will be usable until a new preset is loaded and then modified.

On the same page are present the audio processing parameters. For a detailed description of each parameter, please refer to the [audio processor](#) section:

Processor Drive, Gate Level

[AGC Enabled, AGC Speed](#)

Compression, Master Release

Band Link, Brilliance, Presence

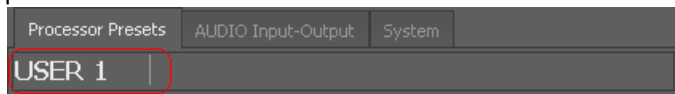
[Bass Lim Thr, Bass Lim Presence, Bass Clip Threshold, Bass Clip Softness](#)

[Bass EQ, Bass EQ Q, Bass EQ Freq](#)

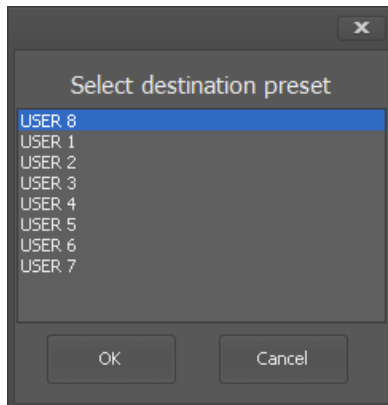
Expander Level, Stereo Expander Enabled

Read: read the parameters setup from the processor

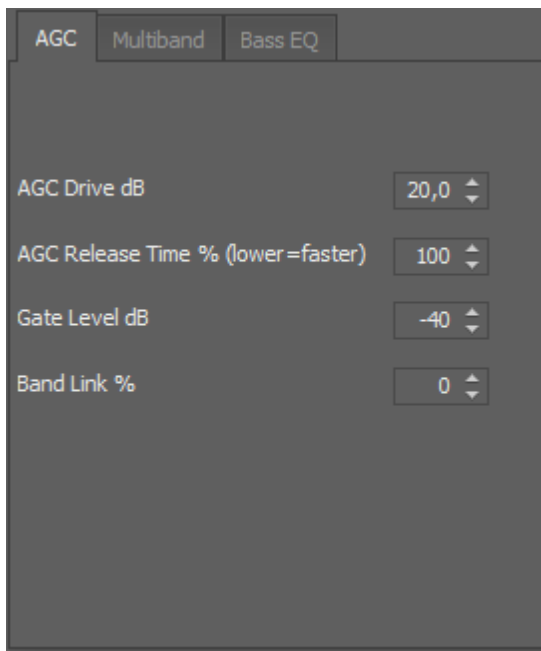
Update: send the modified audio processing parameters to the processor: when a factory or a user preset is modified, a temporary preset will be created. The **Save Onair** button will be enabled to save the preset once changes are terminated. The preset name can be directly changed in the preset name editor.



Then, pressing the **Save OnAir** button, it will be possible to select the destination user preset.



3.2.1.1 AGC



This window contains the settings for the dual band automatic gain control (AGC) block, placed at the head of audio processing chain.

The automatic gain control performs a pre-leveling of the signal applied to the following compressors/limiters, keeping their working point almost constant.

At the right side of the bar which indicates the level of pre-amplification applied to the input signal, is placed the AGC status indicator: if "gate" indication is off, the input level is above the gate threshold and the AGC and compressors/limiters are operating correctly, if "gate" indication is on, it means that the input signal is below the minimum level so the AGC release is slowed down and the AGC will slowly raise its gain.

AGC Drive: indicates the AGC input driving level, thus determining the AGC maximum gain .

AGC Release Time: AGC release time setting between 40% fastest and 200% slowest.

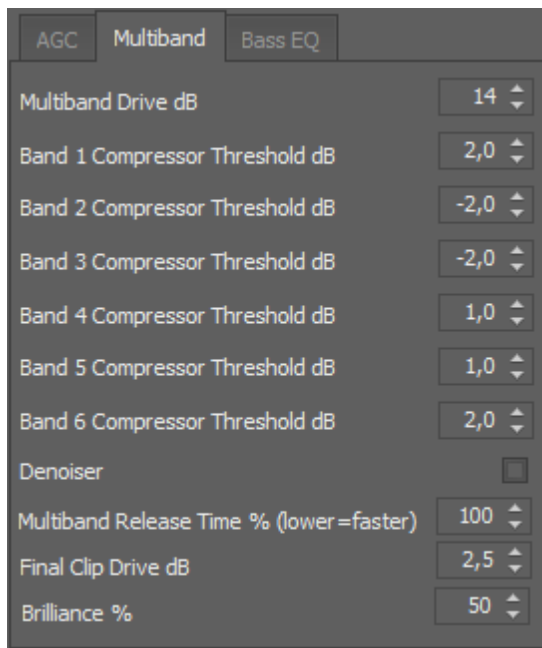
Gate Level dB: Gate level setting. Below this level, the AGC and multiband limiter release is slowed down, the signal below this threshold it is no longer considered processable.

Band Link %: set the maximum compression difference between the bass and middle/highs band, increasing this value the two band link together.

Setting this value to zero, the bass compression level will be totally independent and this will cause also a mild auto-equalization.

Setting this value to 100%, it will force the bass compressor to have a gain never greater than the middle/highs band giving a sound very close to the original.

3.2.1.2 Multiband



All six-bands limiters thresholds are adjustable in order to apply a dynamic equalization according to the user's taste. Lowering the limiting threshold of any band will result in attenuating the level of that band, while raising the threshold, will amplify its level.

Multiband Drive dB: indicates the multiband limiter driving level, thus determines how much the multibands will work and so re-equalize the program.

The six bands cutoff frequencies are :

Band 1 Compressor Threshold dB: 100Hz and below

Band 2 Compressor Threshold dB: 400Hz center frequency

Band 3 Compressor Threshold dB: 800Hz center frequency

Band 4 Compressor Threshold dB: 1600Hz center frequency

Band 5 Compressor Threshold dB: 3200Hz center frequency

Band 6 Compressor Threshold dB: 6400Hz and above

Denoise: Denoiser. If activated, it will monitor the high frequency content of the audio input signal, reducing the band 6 gain when HF input level is too low. It can be used to reduce noise coming from old tape recordings.

Multiband Release Time %: Multiband release time setting between 40% fastest and 200% slowest, making the multiband faster increases the loudness.

FinalClip Drive dB: set the wideband final clipper driving level. Higher driving level corresponds to higher loudness, but will cause higher distortion.

Brilliance: Brilliance high band (>6KHz) shelf equalizer, increasing the value produces an increase in the high frequencies.

3.2.1.3 Bass EQ

Parameter	Value
Bass Equalizer gain dB	6,0
Bass Equalizer Q	1,4
Bass Equalizer Frequency Hz	65
Punch	2
Bass Clip Threshold dB	-3,0
Bass Clip Softness	8

Bass Equalizer gain dB: gain (boost) of parametric equalizer.

Bass Equalizer Q: Q-factor (bandwidth) of parametric equalizer, increasing this value the filter becomes more selective around the center frequency.

Bass Equalizer Frequency Hz: parametric equalizer center frequency

Punch: punch enhancer (0 off, 2 max). Give some nice "analog-style" bass enhancing.

Bass Clip Threshold dB: bass clipper threshold, the threshold beyond which the bass clipper begins to cut.

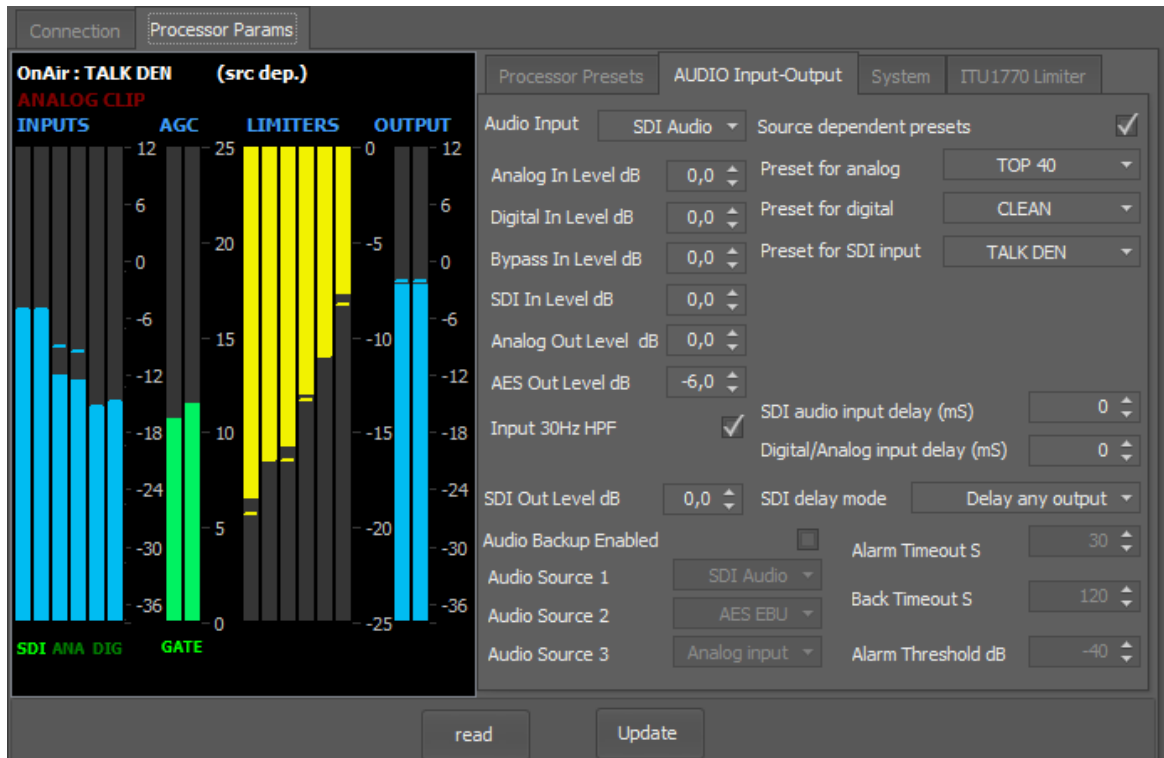
Bass Clip Softness: bass clipper curve selection.

Bass clipper will have a curve progressively softer with increasing value.

A softer curve reduces the distortion introduced by the clipping in contrast, setting to zero (corresponding to the hardest curve), will produce a bass rich in harmonics.

3.2.2 Audio input-output

This page allows for selection of on air audio input, changing audio output parameters, setting up the audio fallback and the source dependent presets.



This page allows for selection of on air audio input, changing audio output parameters, setting up the audio fallback and the source dependent presets add audio Delay on SDI input and Analog / AES EBU input.

For a detailed description of the following parameters, please refer to [audio input setup](#), [audio output setup](#), [Audio delay](#) and [source dependent presets](#)

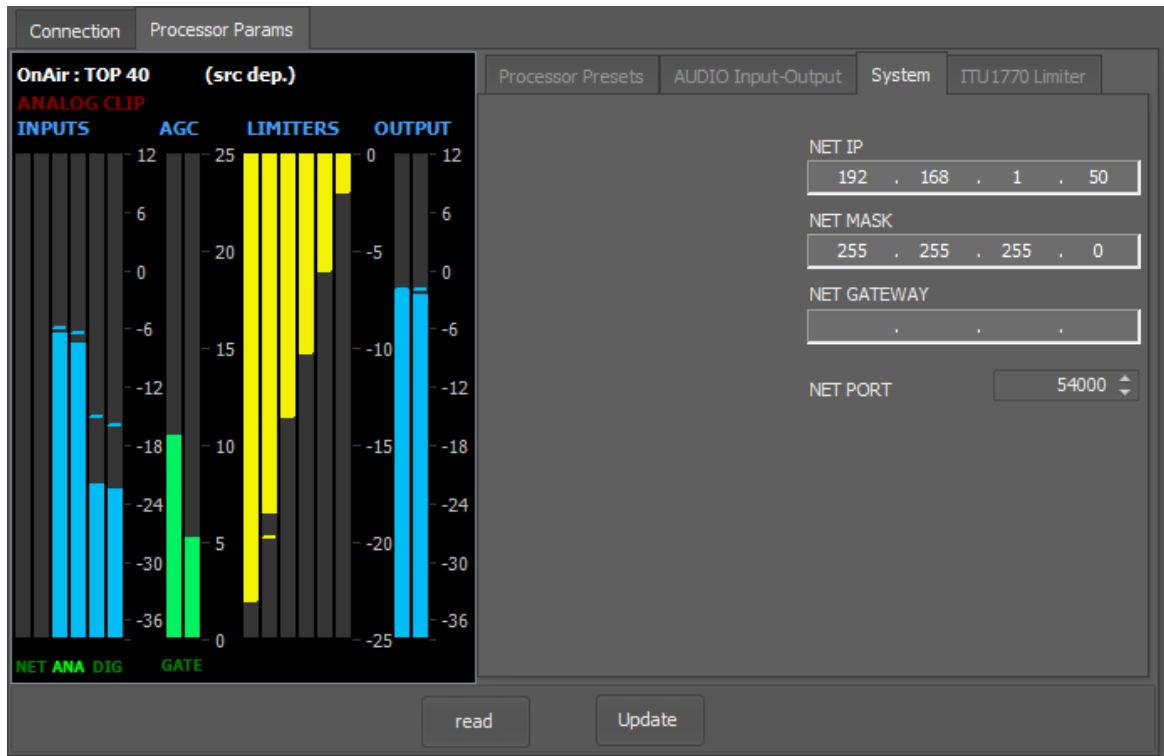
[Audio Input, Analog InputLevel, Digital InputLevel, Network InputLevel Bypass InputLevel](#)
[Audio OutputLevel](#)
[Audio Backup Enabled](#)
[Source dependents presets](#)

Read: read parameters from the processor

Update: send changes to the processor

3.2.3 System setup

In this page it is possible to insert and adjust the network parameters.



The network parameters are related to the optional network module only. If the streaming module was installed, network configuration will be done through the web server of the module.

For a detailed description of the following parameters, please refer to [System setup](#)

[NET IP, NET MASK, NET GATEWAY, NET PORT](#)

Read: read parameters from the processor

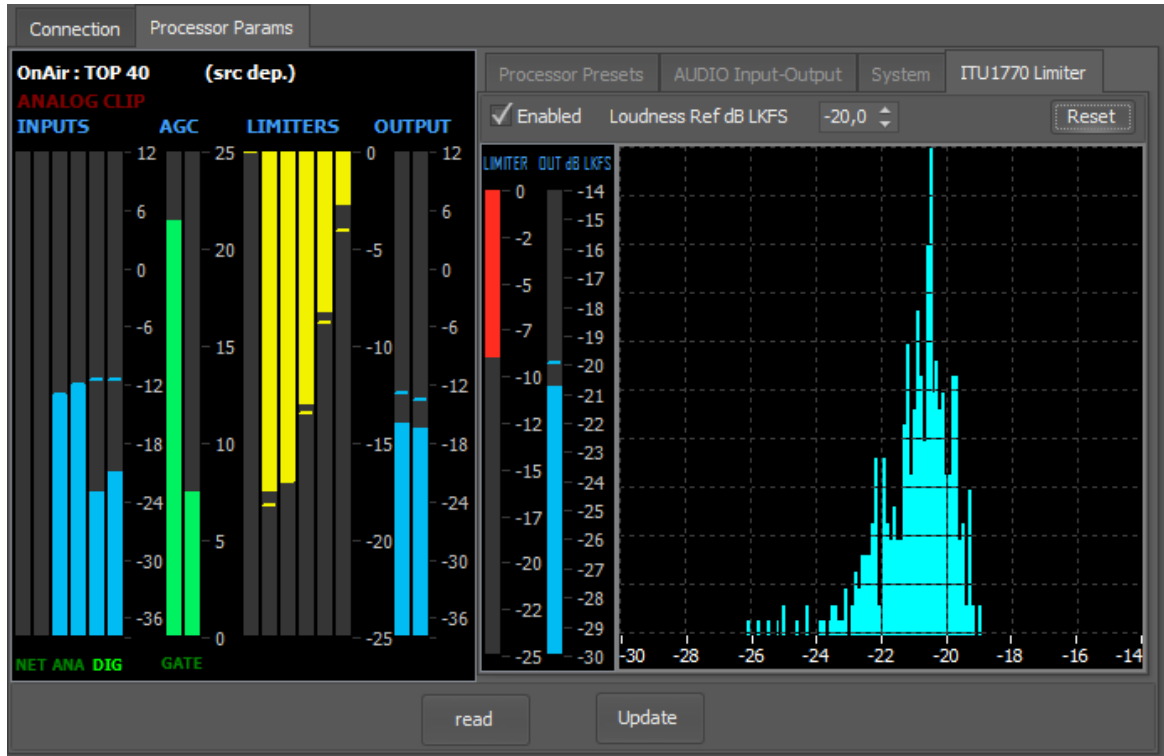
Update: send changes to the processor

3.2.4 Loudness limiter

In this window is possible to set the loudness limiting reference level, according to the ITU-R BS.1770 standard. The limiting level is shown on the red bar labeled "LIMITER". The "OUT dB LKFS" bar shows the current loudness level with a 400mS integration time.

On the histogram window is shown the loudness level integrated over time. Pressing the "Reset" button will start a new measure and clear all previous values.

For a detailed description of the following parameters, please refer to [Loudness limiter](#) section.

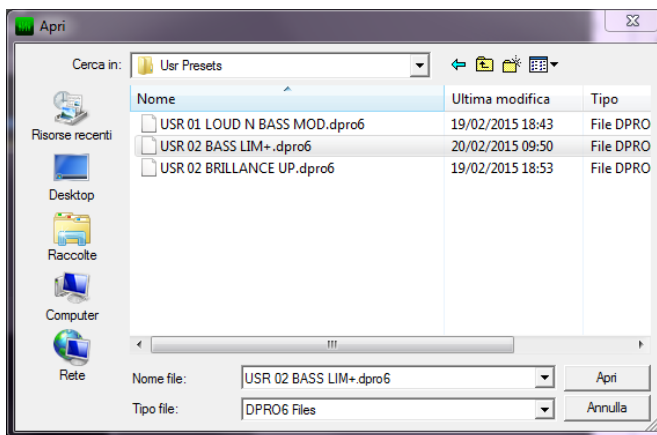
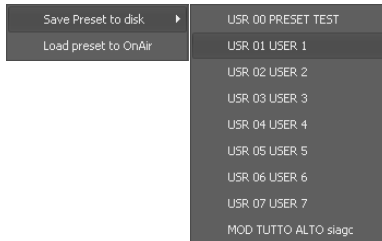


3.3 Loading and saving a preset

All the audio presets customized by the user can be saved in files, this preset can be transferred to another DPRO or saved in an external drive.

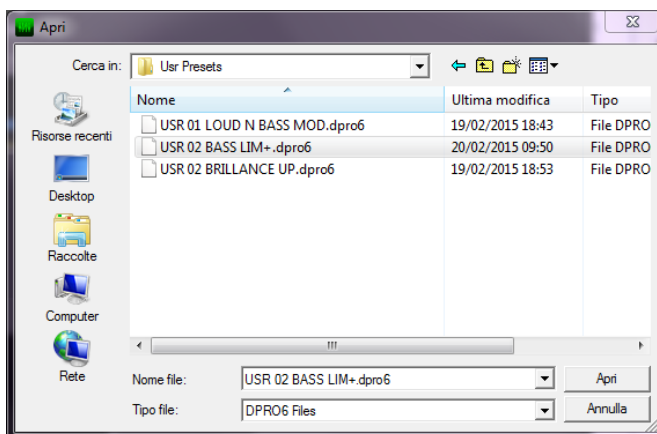
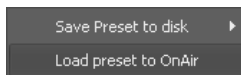
The remote control software allows to load and save the audio processing presets through the File>Processor menu:

Save Usr Presets to Disk



the on air preset will be saved to disk.

Load Usr Presets to Onair

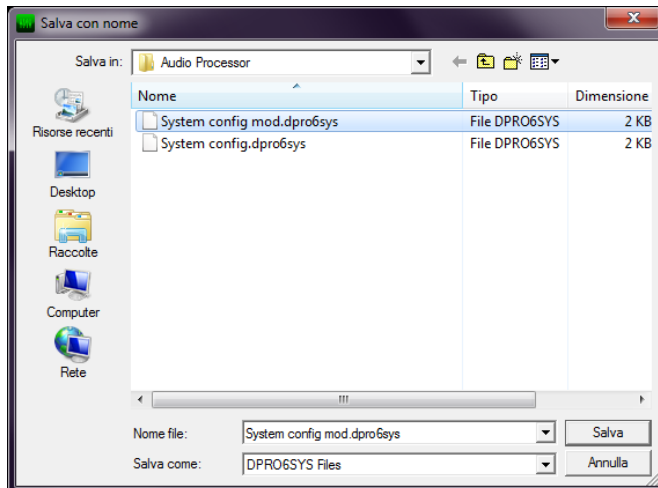
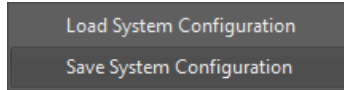


the preset loaded will be put on air.

3.4 Loading and saving system

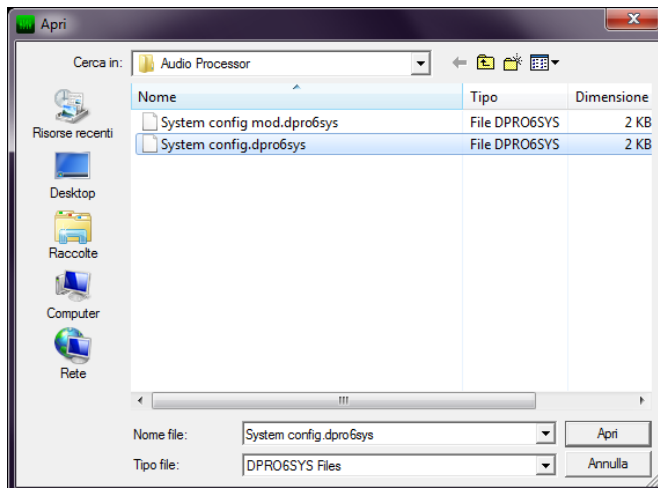
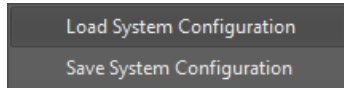
The remote control software allows to load and save the system configuration through the "System" menu, and this includes all parameters listed under "System" and "Audio Input-Output" tabs.

Save System config to Disk



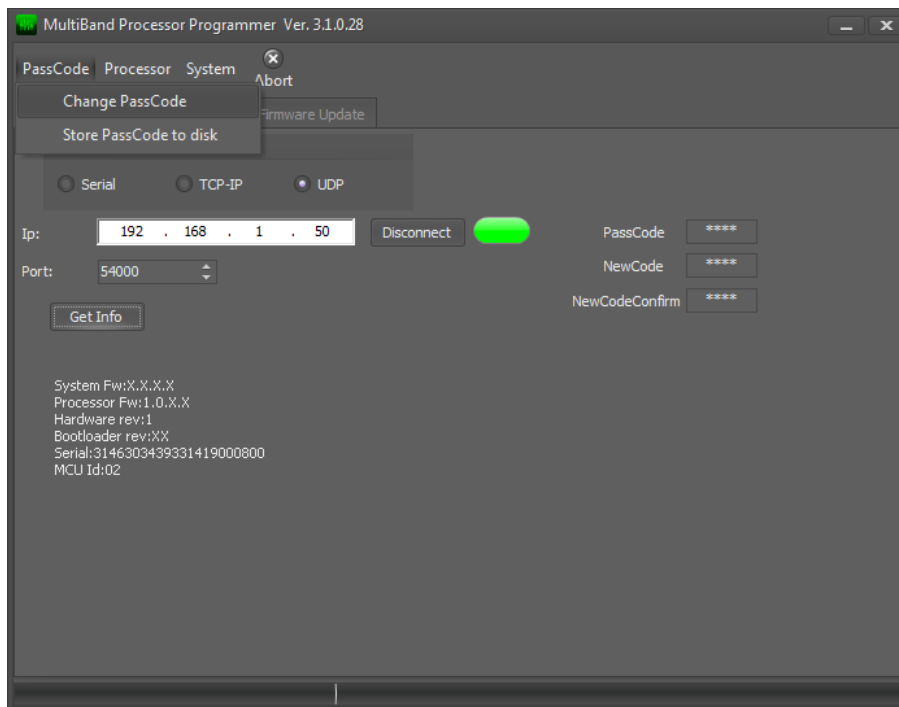
the system configuration will be saved to disk.

Load System config from Disk



the system config preset loaded in.

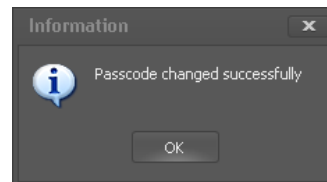
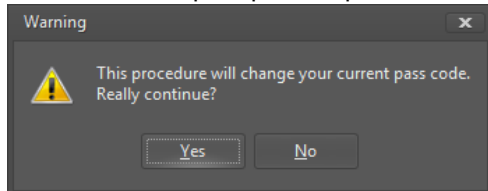
3.5 Passcode setup



To protect the device from unauthorized operation, a security code can be set. The default code is 0000 (security disabled), but it can be changed through the following procedure:

Put the current Passcode into the PassCode edit box (0000 by default).
Put a new code into the "New Code" and, the same again, into the "New Code Confirm" editor.
Go to Menu->PassCode->**Change Passcode**

The user will be prompted for passcode change confirmation, then the passcode will be changed.



Store Password to disk: store the current passcode to not enter it each time the program is used.

